

10-Wheeler Hiabs

Our largest rigid unit designed fitted with our high performing Pk50 crane as well as ample deck space for cartage of materials. Along with exceptional long reach abilities of the crane this crane is also a strong performer with heavy in close lifts.

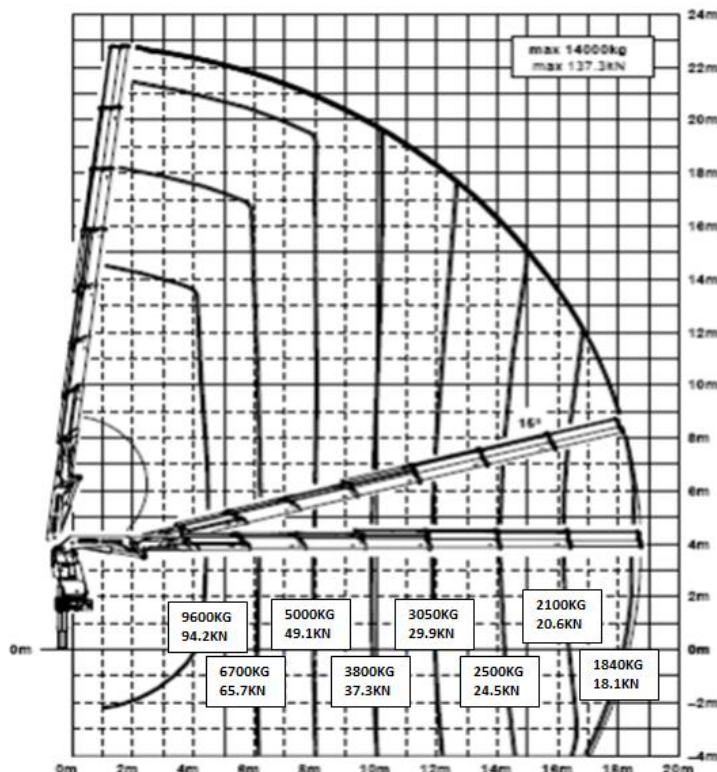


Payload	5800kg
Deck size	2.5m X 6.6m
Crane max @ 4m	9600kg
Crane max @ 32m	350kg

Overall length	12m
Overall Width	3.1m
Overall Height	4.2m
Tare weight	23000kg

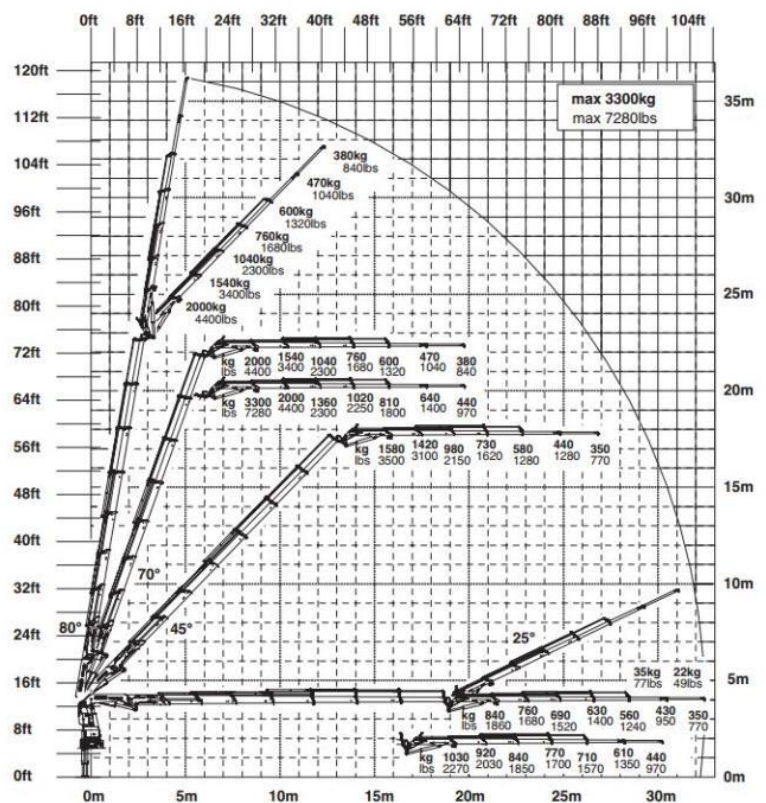
Lifting Chart

Without Flyjib



With Flyjib

F PJ080C JV2 DPS PLUS



All information given are for reference only