

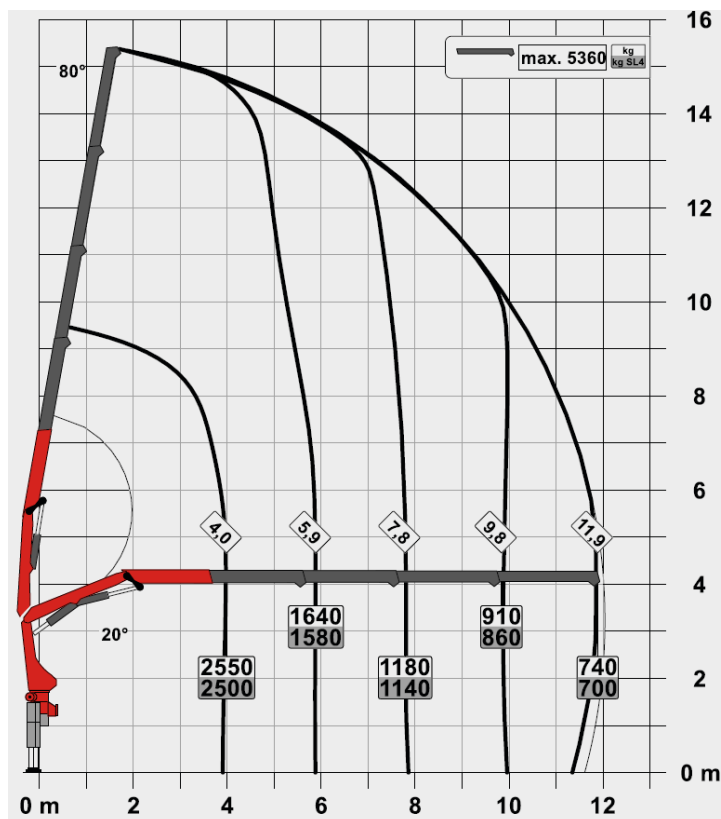
4-Wheeler Hiabs

Compact versatile units optimized for delivery of general building materials. This unit has been designed to maximize the payload with the crane's ability to lift material off on site.



Payload	6000kg	Overall length	9.7m
Deck size	2.5m X 6.5m	Overall Width	3m
Crane max @ 4m	2500kg	Overall Height	3.2m
Crane max @ 12m	900kg	Tare weight	9300kg

Lifting Chart



Crane models vary between 4-Wheeler trucks
Largest PK 12000 model chart is displayed

All information given are for reference only