

## 6-Wheeler Hiabs

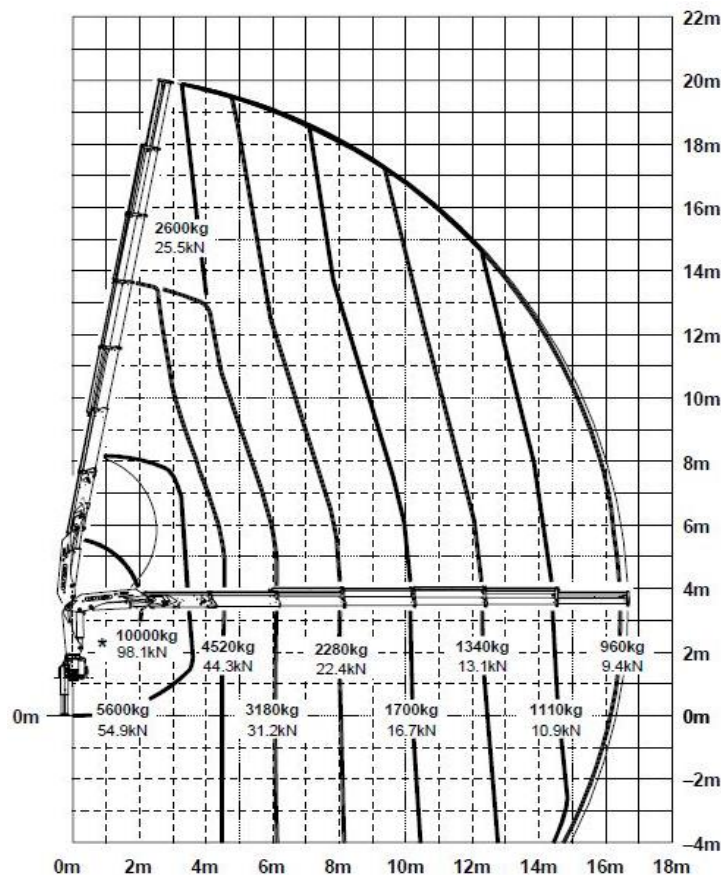
Great unit optimized for delivery of general materials.

These units have a heavier payload than our 4-wheeler as well as being equipped with a larger crane giving it the ability to place materials further.



Payload	8000kg	Overall length	10.3m
Deck size	2.5m X 7m	Overall Width	3.1m
Crane max @ 4m	4500kg	Overall Height	3.7m
Crane max @ 16m	960kg	Tare weight	12600kg

## Lifting Chart



All information given are for reference only