

Fleet Specifications



Contents

Fleet Specifications.....	1
4- Wheeler Hiabs	2
4x4 Hiabs	3
6- Wheeler Hiabs	4
8- Wheeler Hiabs	5
8- Wheeler Hiabs	6
10- Wheeler Hiabs	7
Artic Hiabs	8
Mobile Crane	9
PK200002L SH.....	9
4- Wheeler Curtainsider	14
Small 6-Wheeler Curtainsider	15
Large 6- Wheeler Curtainsider	16
8-Wheeler Truck & Trailer Curtainsider	17
B-Train Curtainsider.....	18
4-Wheeler Flat Deck	19
8-Wheeler Flat Deck	20
Artic Flat Deck Trailer	21
Low Loader Trombone	22
Trombone Trailer.....	23
Pilot Vehicle.....	24

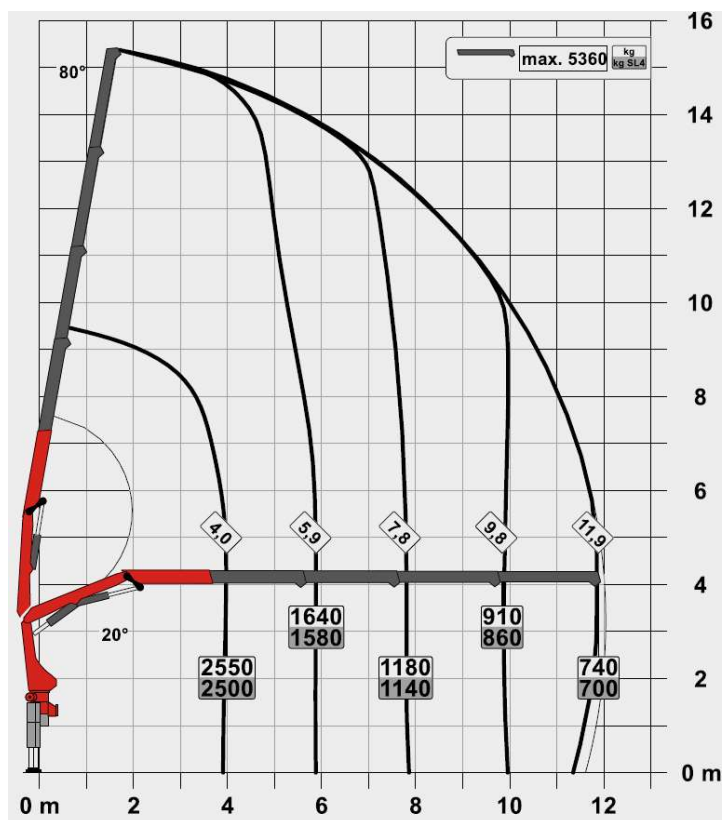
4- Wheeler Hiabs

Compact versatile units optimized for delivery of general building materials. This unit has been designed to maximize the payload with the crane's ability to lift material off on site.



Payload	6000kg	Overall length	9.7m
Deck size	2.5m X 6.5m	Overall Width	3m
Max length on deck	7.4m	Overall Height	3.2m
Crane max @ 4m	2500kg	Tare weight	9300kg
Crane max @ 12m	900kg		

Lift Chart



Crane models vary between 4-Wheeler trucks
Largest PK 12000 model chart is displayed

All information given are for reference only

4x4 Hiabs

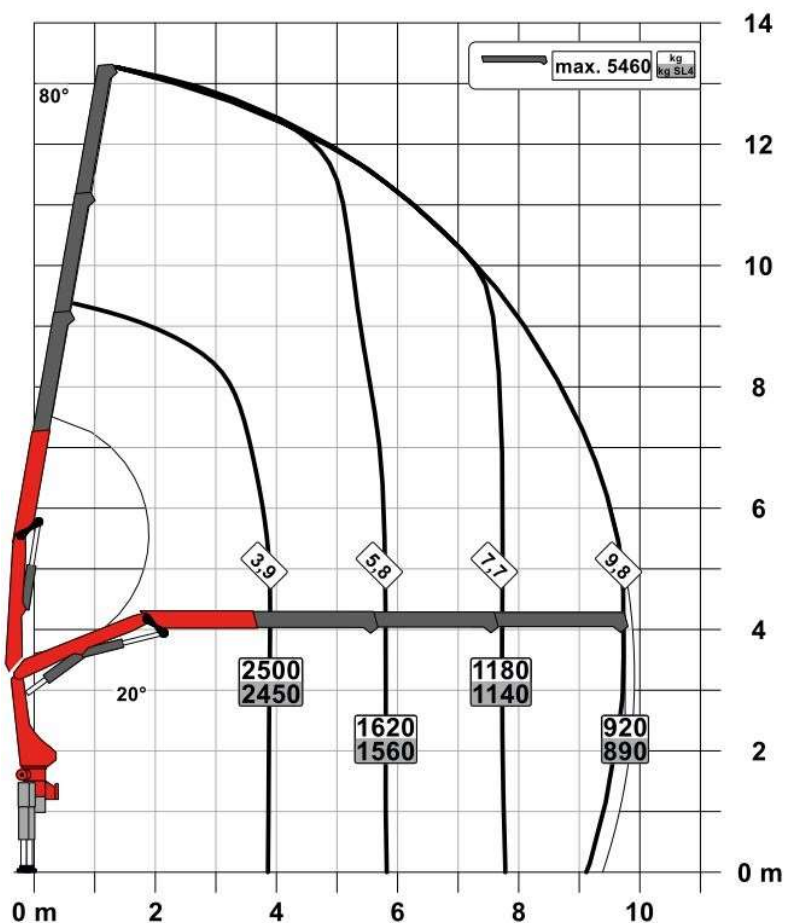
Ideal for those difficult roads or where there are no roads, this 4x4 will help get you to site where large trucks will get stuck.

With this truck being front mounted you can extend of the rear of the truck for any larger loads.



Payload	5000kg	Overall length	9m
Deck size	2.5m X 5.9m	Overall Width	3m
Max length on deck	6.9m	Overall Height	3.4m
Crane max @ 4m	2500kg	Tare weight	7,900kg
Crane max @ 9.6m	890kg		

Lift Chart



All information given are for reference only

6-Wheeler Hiabs

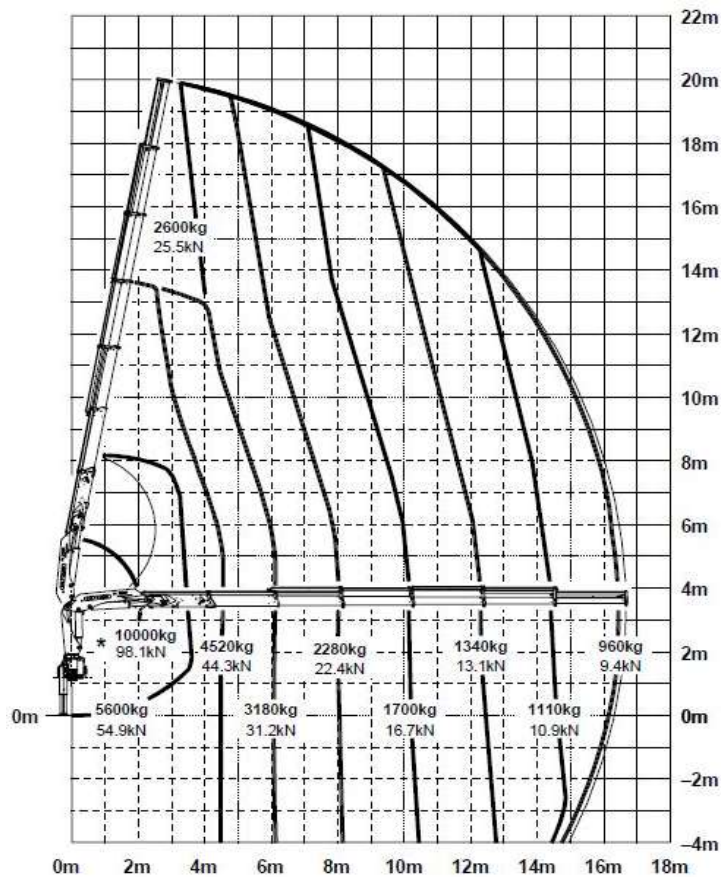
Great unit optimized for delivery of general materials.

These units have a heavier payload than our 4-wheeler as well as being equipped with a decent crane on the rear of the truck giving it the ability to place materials further into site.



Payload	8000kg	Overall length	10.3m
Deck size	2.5m X 7m	Overall Width	3.1m
Crane max @ 4m	4500kg	Overall Height	3.7m
Crane max @ 16m	960kg	Tare weight	12600kg

Lifting Chart



All information given are for reference only

8-Wheeler Hiabs

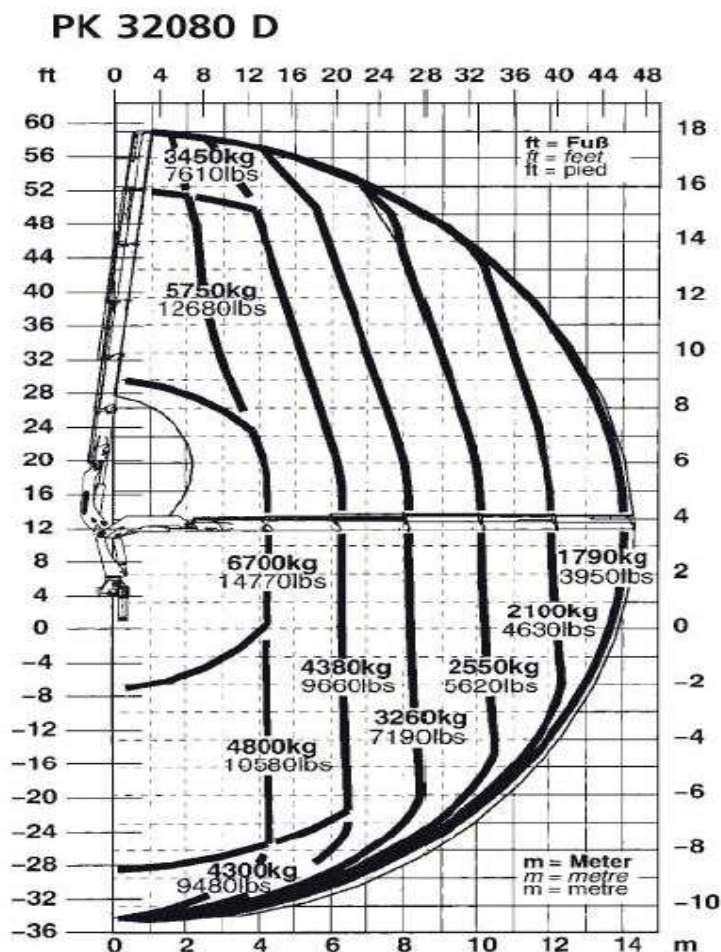
Front mounted

Designed to allow for transport of indivisible loads that are too long fit on our rear mounted 8 wheelers, this unit also has high payload great lifting crane and can also tow a trailer to help carry more freight.



Payload	9600kg	Overall length	9.8m
Deck size	2.5m X 6.6m	Overall Width	3.1m
Max length on deck	8.0m	Overall Height	3.6m
Crane max @ 4m	6700g	Tare weight	16400kg
Crane max @ 14m	1700kg		

Lifting Chart



All information given are for reference only

8-Wheeler Hiabs

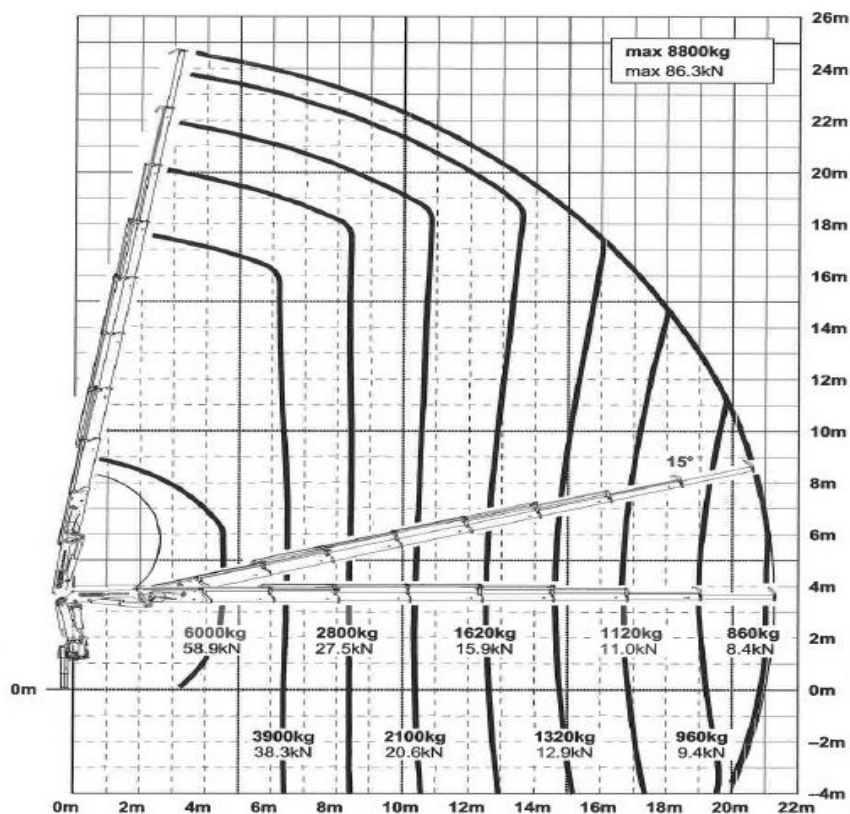
Rear Mounted

Well-equipped units to perform a range of tasks, they have great maneuverability and are fitted with a strong performing crane for heavy lifts in close or reaching up to 23m these units can also tow a trailer.



Payload	7000kg	Overall Width	3.1m
Deck size	2.5m X 6.4m	Overall Height	3.7m
Crane max @ 4m	6000kg	Tare weight	19000kg
Crane max @ 23m	500kg	Attachments:	2.5tn Winch
Overall length	10.5m		

Lifting Chart



Crane models vary between 8-Wheeler trucks
PK 33000 model chart is displayed – with Manual extensions reaches 23 metres

All information given are for reference only

10-Wheeler Hiabs

Our largest rigid unit designed fitted with our high performing Pk50 crane as well as ample deck space for cartage of materials. Along with exceptional long reach abilities of the crane this crane is also a strong performer with heavy in close lifts.

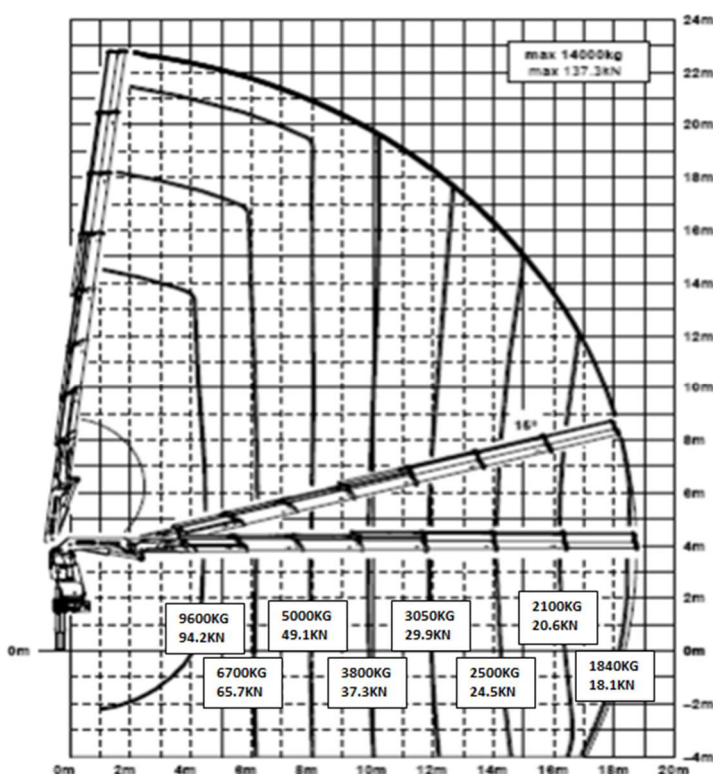


Payload 5800kg
Deck size 2.5m X 6.6m
Crane max @ 4m 9600kg
Crane max @ 32m 350kg

Overall length 12m
Overall Width 3.1m
Overall Height 4.2m
Tare weight 23000kg
Attachments 2.5tn Winch or Workman Basket

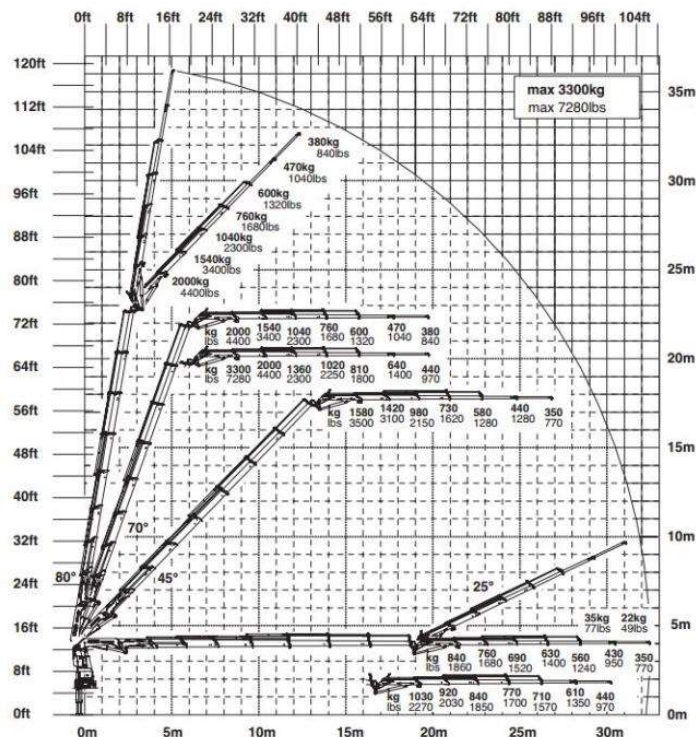
Lifting Chart

Without Flyjib



With Flyjib

F PJ080C JV2 DPS PLUS



All information given are for reference only

Artic Hiabs

Truck Mounted

An extremely versatile artic unit with different configurations to suit the job at hand, the truck can be equipped with a demountable deck to be used as a rigid unit or an array of artic trailers can be attached from a trombone trailer for long loads to a low-loader for over height loads. It is equipped with our pk53 crane which has excellent long reach and winch capability.



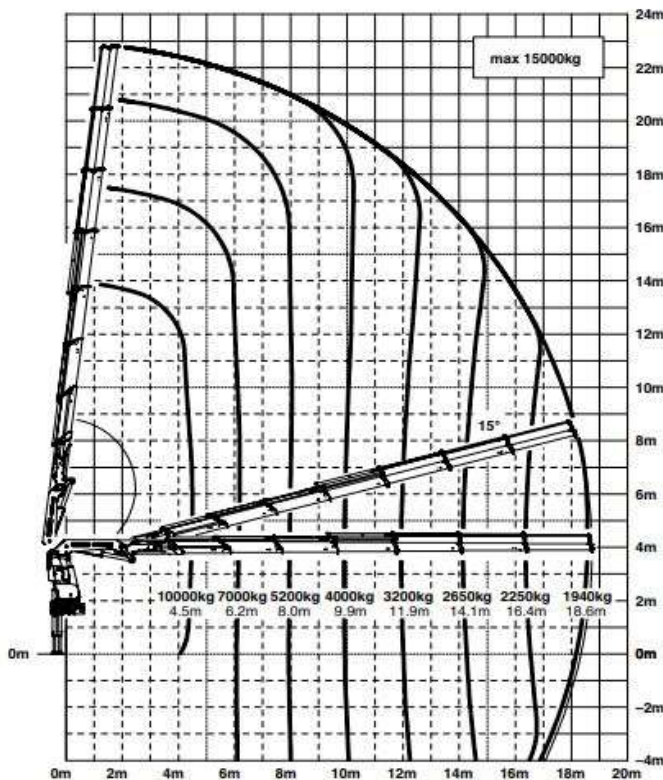
Payload	5800kg
Deck size	2.5m X 5.3m
Crane max @ 4m	10,000kg
Crane max @ 32m	370kg

Overall length	12m
Overall Width	3.1m
Overall Height	4.2m
Tare weight	23000kg
Attachments:	Winch/ Demountable deck

Lifting Chart

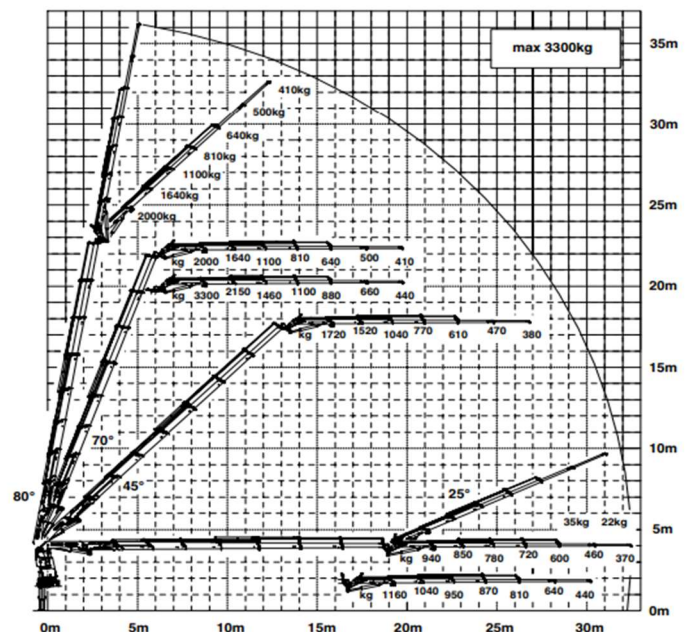
Without Flyjib

With Flyjib



F PJ080C JV2 DPS PLUS

X



All information given are for reference only

Mobile Crane

PK200002L SH

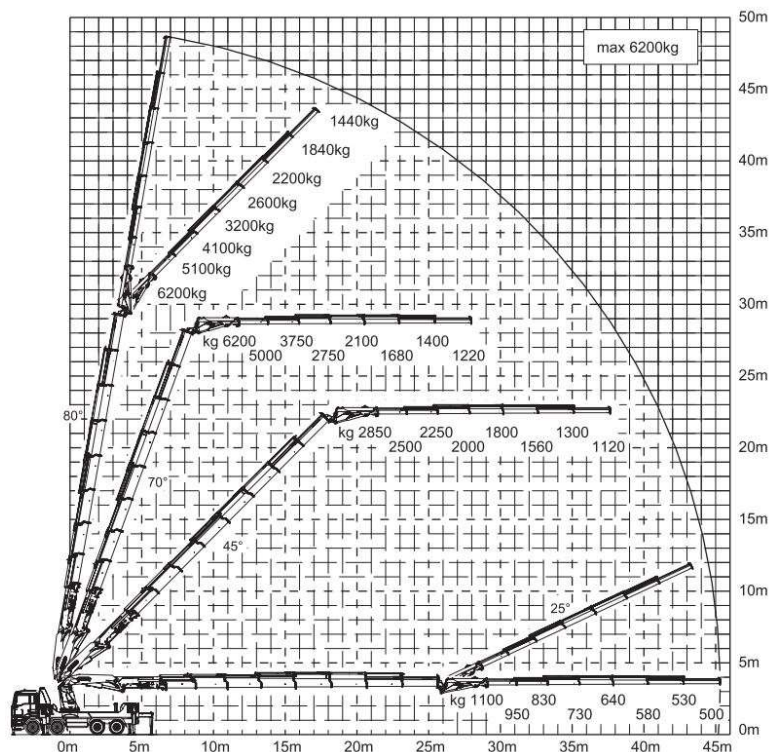
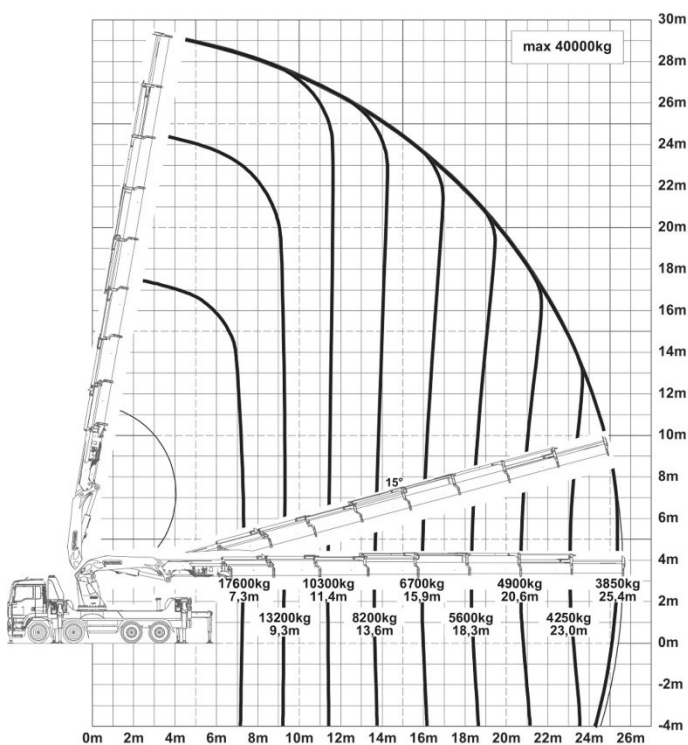
The largest Palfinger crane manufactured. This unit has the advantages of knuckle boom operation with a fly jib and winch to lift into those hard-to-reach places. It has a multi-function adaptor that extends the total reach to 50-meters. There is also a workman basket which attaches to the fly jib that fully complies as an elevated work platform.



Payload	N/A
Deck size	N/A
Crane max @ 7m	17,600kg
Crane max @ 50m	350kg

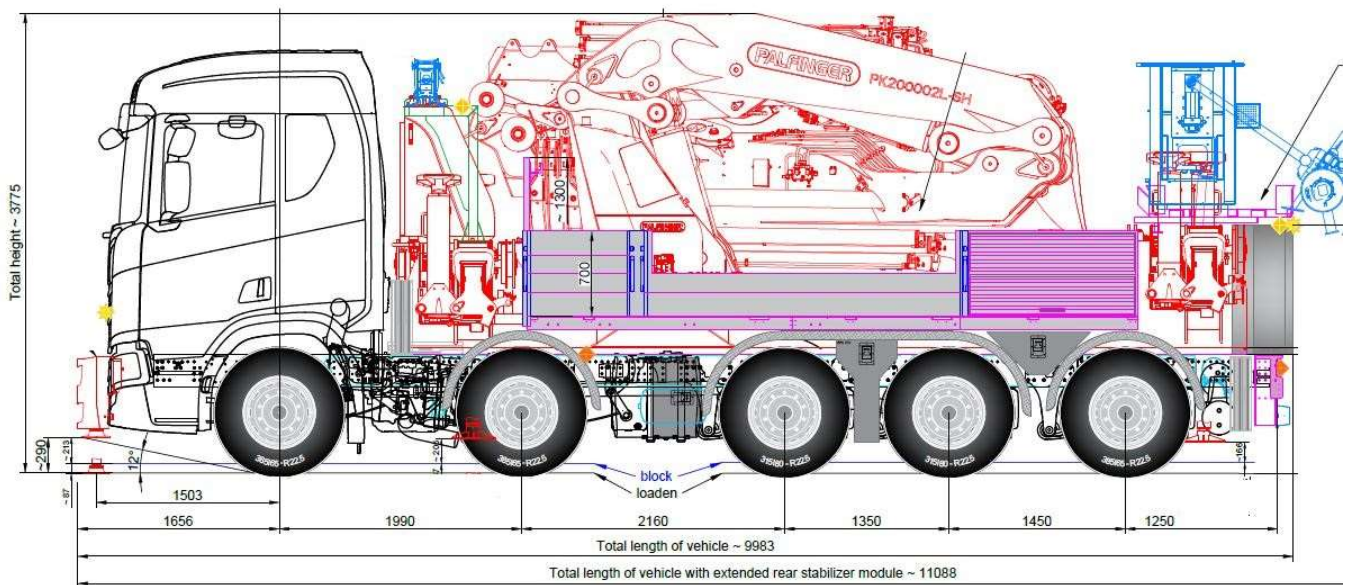
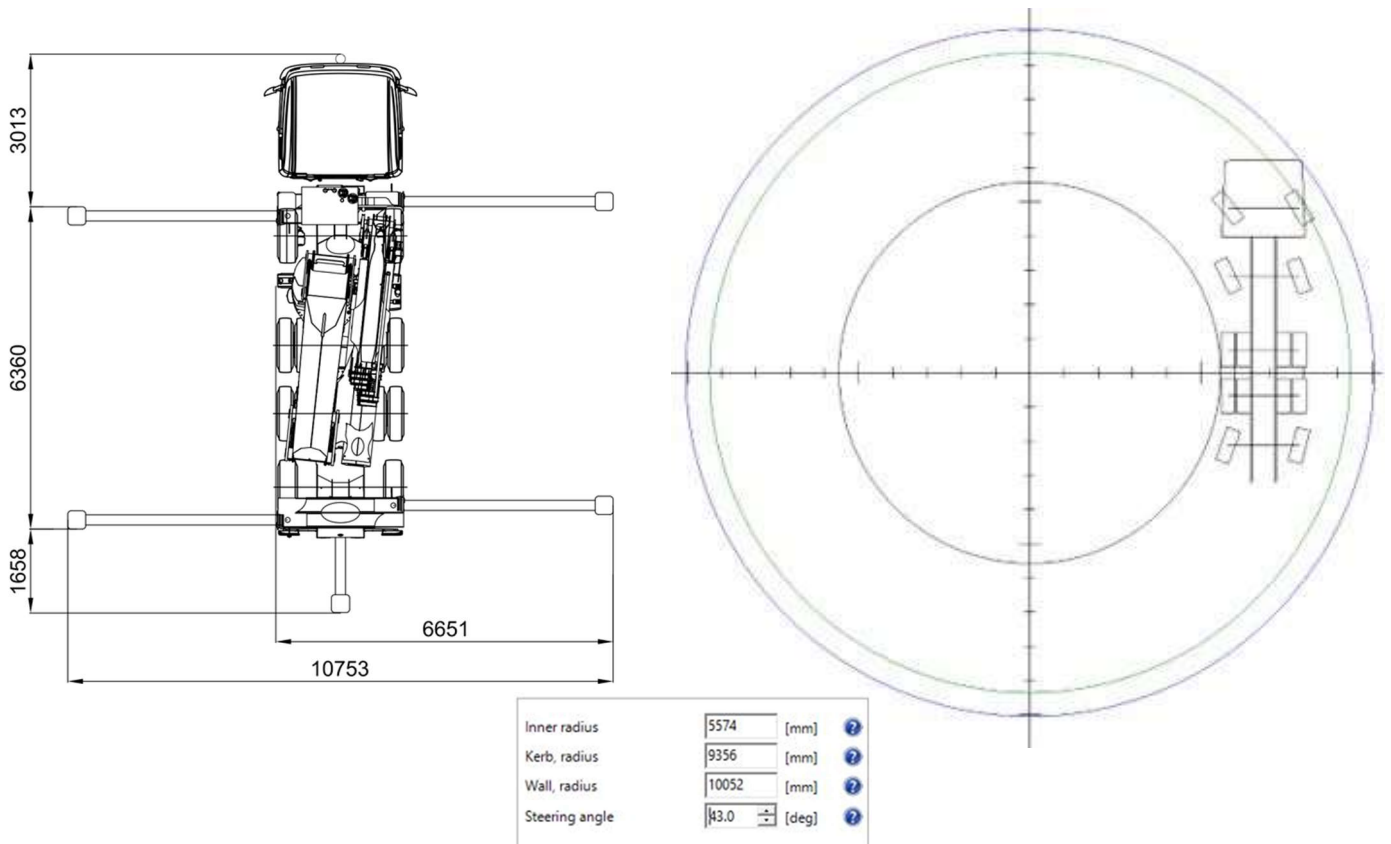
Overall length	9.98m
Overall Width	3.1m
Overall Height	3.78m
Tare weight	43,000 kg

Lifting Chart



All information given are for reference only

STL200 Dimensions



Gross Weight 43 Tonne
9 Tonne per Axle

All information given are for reference only



All information given are for reference only



All information given are for reference only

Van



A mighty van that can carry a large payload with a lot of space in the rear, there are sliding doors on each side and double door at the rear that open right out to provide clear access into the back.

Payload	1890kg	Pallet capacity	4 (Cheps)
Deck size	1.7m X 4.5m	Overall length	6m
Internal height	1.8m	External Height	2.5m
Total Cubic space	14 m3	Tare weight	2600kg

All information given are for reference only

4- Wheeler Curtainsider



A well-equipped small truck that can carry a moderate payload for its size, with its small size this truck is able to get to small sites and with the tail lift attached this truck has the ability to unload itself with the use of a pallet jack.

Payload	6000kg	Pallet capacity	10 (Cheps normal)
Deck size	2.5m X 6.2m	Overall length	10m
Internal height	2.4m	External Height	3.7m
Total Cubic space	37 m3	Tare weight	6000kg

All information given are for reference only

Small 6-Wheeler Curtainsider



Our small sized 6-wheeler is a great unit, it has the benefit of providing the same cubic space for carrying loads as a normal 6-wheeler while having a lower gross vehicle mass this means it does not have the same weight capacity as our large 6-wheelers in saying that it still carries 3000kg more than our 4-wheelers! These units are fitted with a tail lift for self-unloading.

Payload	9,300kg	Pallet capacity	12 (Cheps normal)
Deck size	2.5m X 7.7m	Overall length	10m
Internal height	2.7m	External Height	3.75m
Total Cubic space	51 m3	Tare weight	7700kg

All information given are for reference only

Large 6-Wheeler Curtainsider



Our large single unit equipped to carry a high capacity in weight and cube. Along with this, it also has a good maneuverability for its size. This truck is also equipped with a tail lift for unloading at a site without a fork hoist.

Payload	11,300kg	Pallet capacity	12 (Cheps normal)
Deck size	2.5m X 8.1m	Overall length	11.8m
Internal height	2.6m	External Height	3.9m
Total Cubic space	52.5 m3	Tare weight	9720kg

All information given are for reference only

8-Wheeler Truck & Trailer Curtainsider



Our Truck and trailer Units are a versatile addition to our fleet, they can be used for bulk transfers of stock across Auckland, if some sites are too small for trailer units then the trailer can be left behind and the unit will still deliver up to 14,000kg of freight with the truck only.

Payload T&T	25,900kg	Total pallet capacity	24 (Cheps normal)
Payload Truck only	14,000kg	Overall length	19.85m
Truck deck size	2.5m X 6.8m	External Height	4.1m
Trailer deck size	2.5m X 8.4m	Tare weight	18,000kg
Truck internal height	2.8m		
Trailer internal height	2.9		
Total Cubic space	108.5 m ³		

All information given are for reference only

B-Train Curtainsider



Our B-train can be utilized for bulk movement of stock across Auckland, the 1st trailer has a moveable step deck platform to allow pallets to sit on a flat surface and not overhang the step while in transit.

Payload	26,000kg	Total pallet capacity	24(Cheps normal)
1 st trailer deck size	2.5m X 7.5m	Overall length (trailers only)	16.1m
2 nd trailer deck size	2.5m X 7.5m	External Height	4.15m
1 st trailer internal height	2.6/2.9m (Step deck)	Tare weight	18,000kg
2 nd trailer internal height	2.9m		
Total Cubic space	105.8 m ³		

All information given are for reference only

4-Wheeler Flat Deck



Great small truck for getting into small sites, this truck can also tip loads off.

Payload	4,600kg	Pallet capacity	8 (Cheps normal)
Deck size	2.25m X 5.1m	Overall length	7m
		External Height	2.4m
		Tare weight	3,900kg

All information given are for reference only

8-Wheeler Flat Deck



A perfect work horse to carry all sorts of loads, heavy or large. this truck can also tow a trailer which offers a payload of 24,000kg.

Payload	14,500kg	Pallet capacity	14 (Cheps normal)
Deck size	2.5m X 8m	Overall length	10.3m
		External Height	3.2m
		Tare weight	11,500kg

All information given are for reference only

Artic Flat Deck Trailer



A good standard Artic flat deck trailer for all purposes

Payload	21,000kg	Deck Height	1.4m
Deck size	2.5m x 13-14m	Tare weight	6,500kg

All information given are for reference only

Low Loader Trombone

This Low loader packs many features which makes it a very versatile unit.

It can be used as a standard Low loader trailer with its ramps, or the ramps can be removed to allow a load overhang out over the rear.

The unit can be extended out from the bottom of the step deck to increase the deck length.

There are also riser attachments that can allow for the bottom deck to be at the same height as the top deck.



Payload	16,000kg	Lower Deck Height	0.9m
Deck size	Refer to chart below	Upper Deck Height	1.5m
Deck width	2.5m	Tare weight	5,750kg

Trombone Lengths

Trombone Lowloader

	Closed	1st Lock	2nd Lock	3rd Lock	4th Lock	5th Lock	6th Lock	7th Lock	8th Lock	9th Lock
Forward Distance	8.54	9.19	10.45	11.69	12.0	12.43	13.0	13.54	14.0	14.63
Bottom Deck length	9.3	9.7	11.2	12.42	12.8	13.2	13.8	14.3	14.8	15.4
Total Deck Length	12.3	12.7	14.2	15.42	15.8	16.2	16.8	17.3	17.8	18.4

Note: trailer extends from bottom of step deck

Low Loader Pilot and Permit Requirements

Any position if rear overhang is 7mtrs or more	1x Pilot
3 rd Lock to 6 th lock	1x Pilot
3 rd Lock and rear overhang is more than 7mtrs	2x Pilots
7 th to 9 th Lock	Permit and 2x pilots
7 th to 9 th Lock and rear overhang is more than 7mtrs	Permit and 3x pilots

Note: Rear overhang is measured from the centre of the middle axle to the rear most part of the load.

Forward distance is measured from the centre of the middle axle to the king pin.

Front overhang .8mtr/Rear ramps 1.2mtr

All information given are for reference only

Trombone Trailer

Configured with a standard trombone extension in the middle of the deck and a wind out support extending from the rear of the trailer. With both parts stretched to their max this trailers length is 24.3m



Payload		Deck Height	1.3m
Deck size	Refer to chart below	Tare weight	8,300kg
Deck width	2.5m		

Trombone Lengths

Trombone Trailer

	REAR O/H	Closed	1st Lock	2nd Lock	3rd Lock	4th lock	5th lock	6th lock
FWD	-	3.5	4	4.5	5	5.5	6	6.5
Closed	9.2	14.4	14.9	15.4	15.9	16.4	16.9	17.4
1st Lock	10.3	15.5	16	16.5	17	17.5	18	18.5
2nd Lock	11.4	16.6	17.1	17.6	18.1	18.6	19.1	19.6
3rd Lock	13.3	18.5	19	19.5	20	20.5	21	21.5
4th Lock	14.7	19.9	20.4	20.9	21.4	21.9	22.4	22.9
5th Lock	16.1	21.3	21.8	22.3	22.8	23.3	23.8	24.3

Note: Rear wind out not suitable for supporting heavy loads i.e. Structural steel

Pilot and Permit Requirements

Any position if rear overhang is 7mtrs or more	1x Pilot
3 rd FWD Lock	1x Pilot
3 rd FWD Lock and rear overhang is more than 7mtrs	2x Pilots
4 th to 6 th FWD Lock	Permit and 2x pilots
4 th to 6 th FWD Lock and rear overhang is more than 7mtrs	Permit and 3x pilots

Note: Rear overhang is measured from the centre of the middle axle to the rear most part of the load. Forward distance is measured from the centre of the middle axle to the king pin.

All information given are for reference only

Pilot Vehicle



We have a fleet of Utes equipped with lights and signage for piloting needs of any over dimensional loads, our inhouse team can also assist with the planning of routes, Permits and Load placement for transit.

All information given are for reference only